







## Cherry Tree Road, Hoddesdon, EN11 9JS

Westwood Leber is excited to present this exceptional semi-detached house, ideally located on the tranquil Cherry Tree Road in Hoddesdon—an absolute treasure for a growing family. Featuring 4 bedrooms and 2 bathrooms, this property is a rare gem within a sought-after residential cul-de-sac.

Upon entering this beautifully maintained home, you are greeted by a bright and inviting hallway that leads to a cozy living room, a spacious fitted kitchen, and a luminous dining room that seamlessly opens to the rear garden. The decor is both stylish and contemporary, showcasing elegant wood flooring, tiled bathrooms, and a soothing neutral color palette throughout.

As you make your way upstairs, you'll find three well-proportioned bedrooms on the first floor, complemented by a large family shower room. The top floor is dedicated to the main bedroom, which offers ample eaves storage and an expansive shower room.

The outdoor space is a true standout feature, beginning with a partly paved garden area that leads to a raised lawn and a generous detached summerhouse. This versatile retreat is equipped with a kitchen area, making it perfect for hosting guests or transforming into a gym, games room, or workshop. Additionally, a convenient home office with its own side access is ideal for those working remotely.

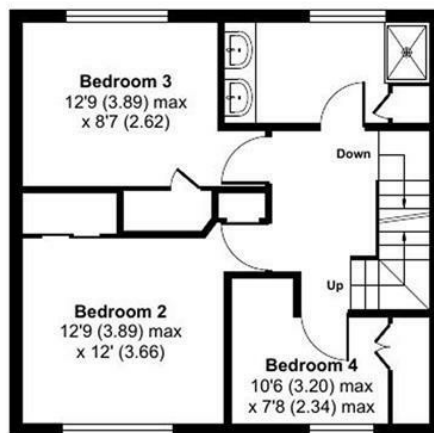
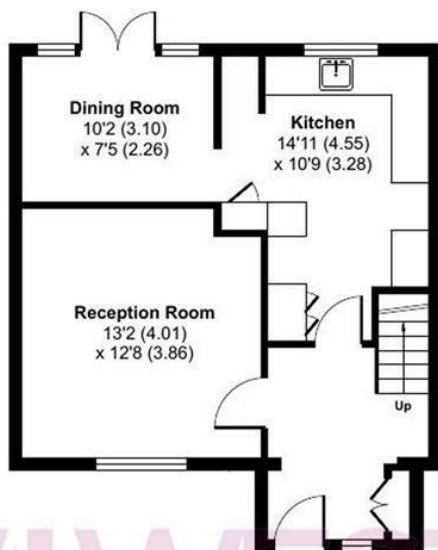
Completing this wonderful property is a charming gazebo situated on the side, creating a perfect setting for delightful al fresco dining throughout the summer months. This home truly embodies a harmonious blend of comfort, functionality, and limitless possibilities for a family seeking to settle in a peaceful yet well-connected neighborhood.



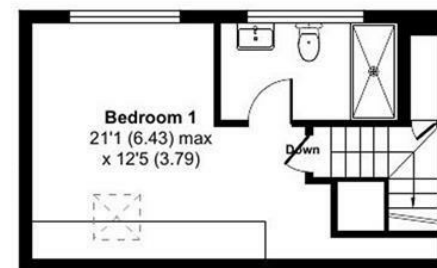


**W** WESTWOODLEBER

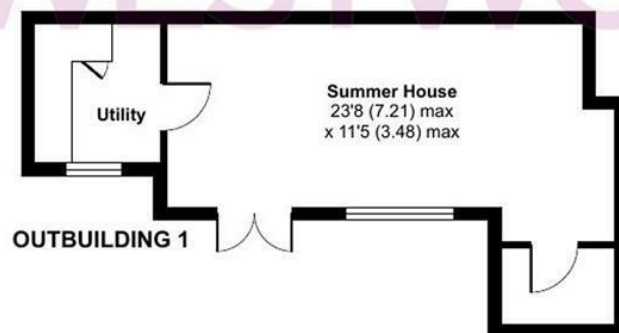
**W** WESTWOODLEBER  
LET US GUIDE YOU HOME



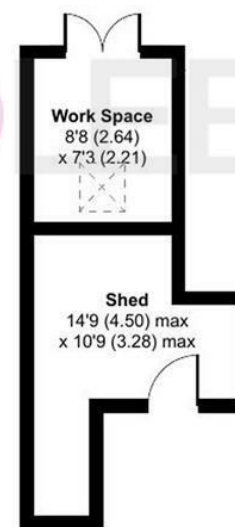
FIRST FLOOR



SECOND FLOOR



OUTBUILDING 1



GROUND FLOOR

Total area: approx. 156.3 sq. metres (1682.4 sq. feet)

THE FLOORPLAN IS FOR ILLUSTRATIVE PURPOSES ONLY AND IS NOT TO SCALE. Measurements and features are approximate and may differ from the actual property. Verify all details independently; no liability is accepted for errors or omissions.

Property marketing provided by [www.fotomarketing.co.uk](http://www.fotomarketing.co.uk)





















 WESTWOODLEBER